

SUNON®



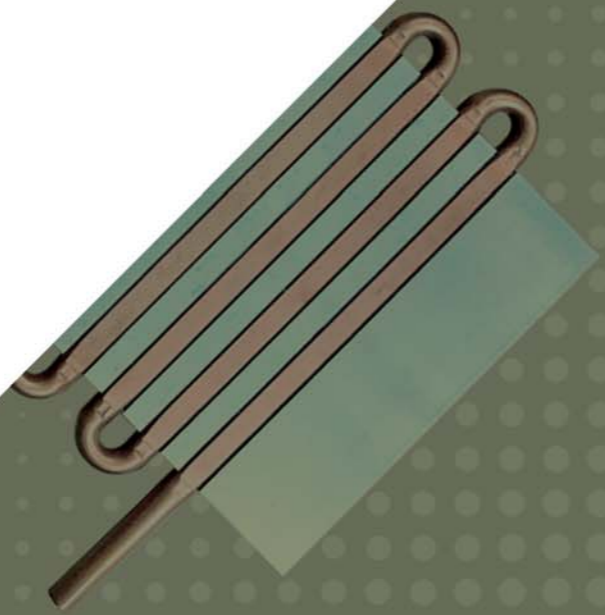
www.sunon.com

SUNON®

Headquarters
Sunonwealth Electric Machine Industry Co., Ltd.
TEL : +886-7-8135888
E-mail : sunon@sunon.com

Sunon Inc. (U.S.A.)
TEL : +1-714-255-0208
E-mail : info@sunon.com

Sunon SAS (Europe)
TEL : +33-1-46154515
E-mail : europe@sunon.com



Customized
Total Thermal Solution

*All products are RoHS compliant.

2020/11/11 (258-W)

© 2020 SUNONWEALTH Electric Machine Industry Co., Ltd.

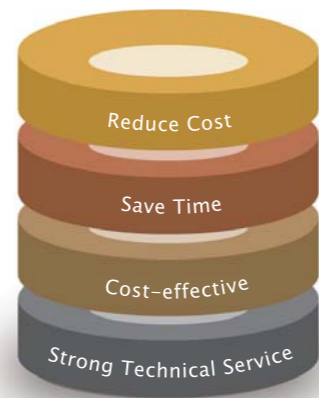


Sunon Offers Heat Dissipation Total Solution Technology and Services

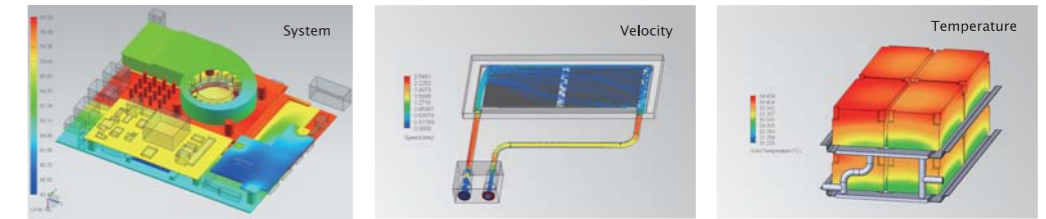
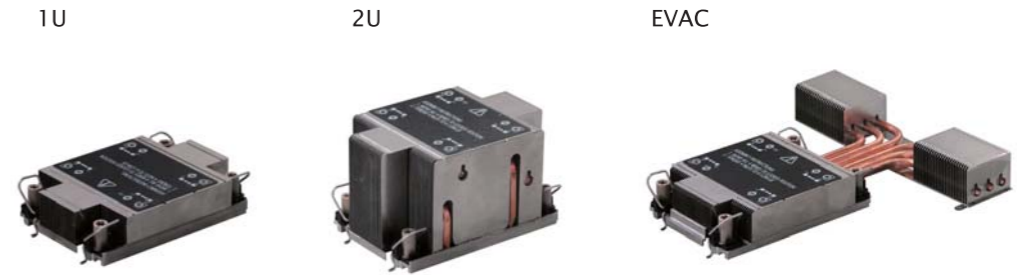
With 40 years experience, Sunon has been concentrating on the research and development of motor core techniques, which has given Sunon a vast clientele with a wide assortment of system experiences and cooling problem-solving abilities. Sunon has been utilizing state-of-the-art equipment and innovative techniques to tailor-make the optimized cooling systems for our clients' latest concept commodities. From function, accessory shape and cost, to perception about commodity experience, Sunon has been paying careful attention to meet clients' particular goals and requirements.

SUNON's Total Solution

- ✓ Increases product profitability
- ✓ Reduces development costs and increases profits
- ✓ Decreases prototype development time
- ✓ Provides the most economic design solution



Intel Ice Lake Server Processor Heatsink Module



Thermal Solution Design & Simulation Analysis

- Individual module / system thermal analysis
- Custom CM design
- Vent Optimization
- Temperature distribution
- Velocity profile
- Pressure distribution

Which Cooling Module Suits You the BEST?

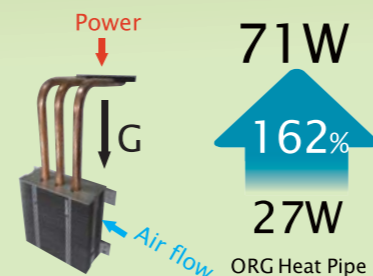
~300W
Heat Sink & Fan

400W
Heat Pipe

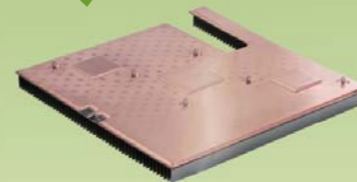
600W
Module QMax.

Dimension: 286x266x40mm
Heat Pipe: D8x6pcs,L:295~388mm
Air Flow: 100CFM

Anti-Gravity Heat Pipe Module



Vapor Chamber

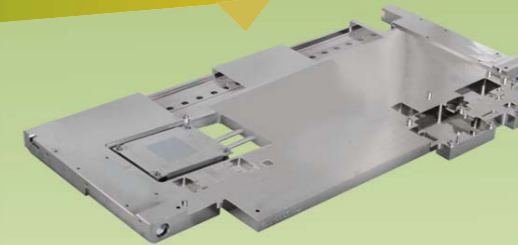


Thickness : 0.4 mm ~ 3 mm
Qmax : 40~1000W

Great for Multiple Heat Source

- Isothermal to 1~2°C
- High Qmax
- High power density
- Lower thermal resistance
- Planar or Radial heat flow

1000W
Cold Plate TYPE : Integral / Pipelining / Embedded

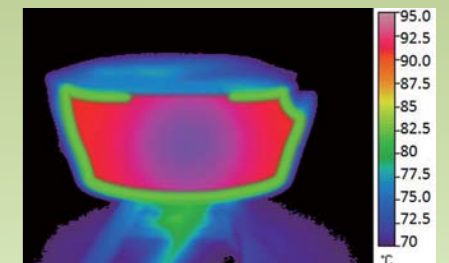


Integral Type + Pipelining Design
Application : Switch
TDP : 800 W
Size : 510 x 250 x 22 mm

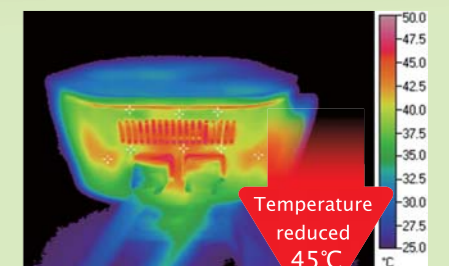
Great for High Power Application

- High Power Density
- Large Power
- Multi Heat Sources
- Thermal Efficiency

IR thermography Analysis
Temperature Distribution



Original Design



Sunon Proposal



Fan From 8x8x5mm~Ø254x89mm



High Power Heat Pipe

The High-Power Heat Pipe possesses high capability of delivering heat energy.

D8 round heat pipe, Qmax could reach 100W for 400mm in length or so.